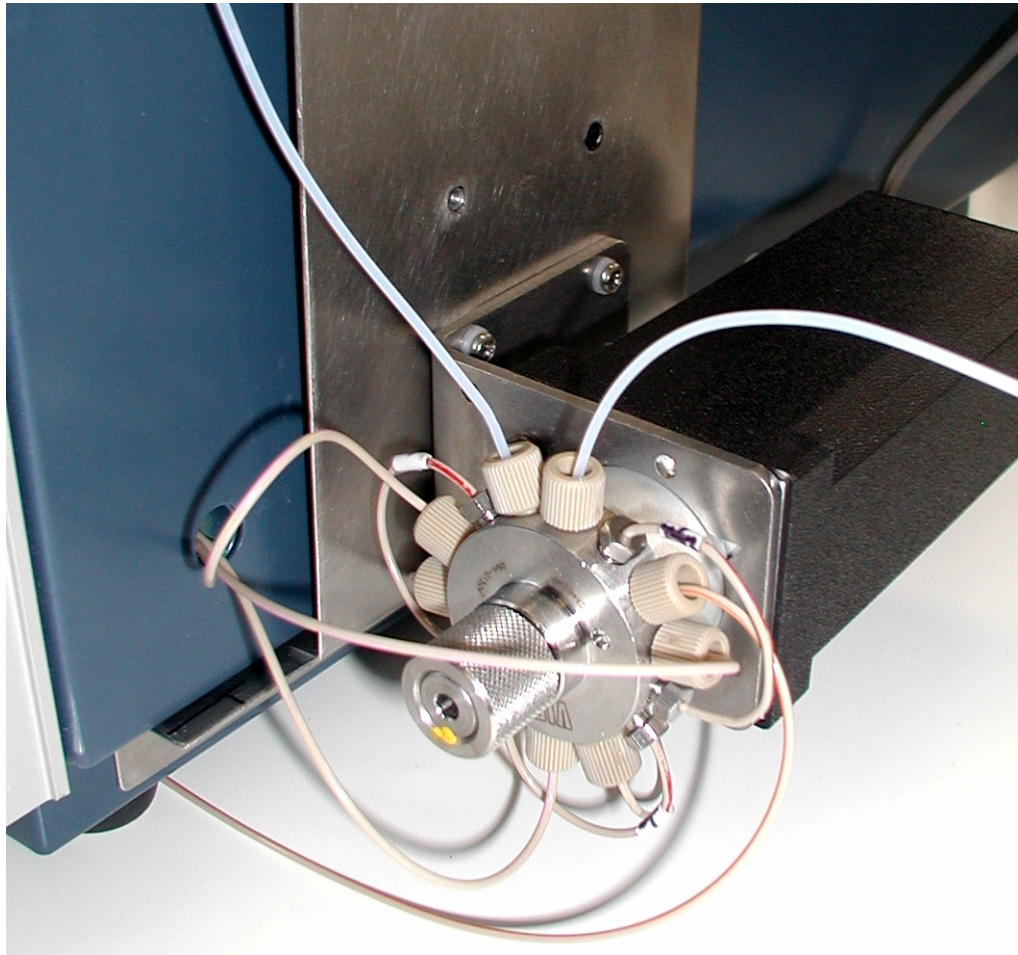


Installation guide OMD valve option



Symbols

The following pictogram is used in this installation guide:



Caution

General precautions



Execute periodic leak checks on LC tubing and connections. Do not allow flammable and/or toxic solvents to accumulate. Do not close or block drains. Follow a regulated, approved waste disposal program. Never dispose of such products through the municipal sewage system.



Use proper eye and skin protection when working with solvents.



Use of this product outside the scope of this guide may present a hazard.

Spare parts and service availability

Manufacturer provides operational spare parts of instruments and current accessories for a period of five years after shipment of the final production run of the instrument. Spare parts will be available after this five years period on an 'as available' basis.

Manufacturer provides a variety of services to support her customers after warranty expiration. Repair service can be provided on a time and material basis. Contact your local supplier for servicing. Technical support and training can be provided by qualified chemists on both contractual or as-needed basis.

Copyright ©2008 Antec Leyden. All rights reserved. Contents of this publication may not be reproduced in any form or by any means (including electronic storage and retrieval or translation into a foreign language) without prior agreement and written consent from the copyright of the owner. The information contained in this document is subject to change without notice.

DECADE II™ Flexcell™, Sencell™, ISAAC™, HyREF™ are trademarks of Antec Leyden BV and ALEXYS® a registered trademark of Antec Leyden BV. Whatman™ (word and device) and Whatman™ (word only) are trademarks of Whatman International Ltd. SOLVENT IFD™ and AQUEOUS IFD™ are trademarks of Arbor Technologies, Inc. Clarity®, DataApex® are trademarks of DataApex Ltd. Microsoft® and Windows™ are trademarks of Microsoft Corporation.

The information provided herein is believed to be reliable. Antec Leyden shall not be liable for errors contained herein or for incidental or consequential damages in connection with the furnishing, performance, or use of this manual. All use of the hardware or software shall be entirely at the user's own risk.

Table of contents

Symbols 1
General precautions 1
Spare parts and service availability 2

Installation guide 5

Introduction 5
Unpacking 5
Tools 6

Valve installation 7

Installation on valve mounting panel 7
Installation on side panel 10

Electrical connections 13

CHAPTER 1

Installation guide

Introduction

The Online MicroDialysis (OMD) valve option (p/n 250.0026 and 250.0014) is a tailor-made kit to install a 6-port or 14-port electrical Valco valve on a DECADE II™ detector in an ALEXYS® LC-EC system for online microdialysis. The valve can either be mounted on a DECADE II valve mounting panel or to the side panel of the detector directly.

Unpacking

Inspect the *transport box* for possible damage as it arrives. Immediately inform the transport company in case of damage, otherwise she may not accept any responsibility. Keep the transport box as it is designed for optimum protection during transport and it may be needed again. Carefully unpack the kit and inspect it for completeness and possible damage. The contents of the kit is shown in figure 1.



Figure 1. Contents of OMD valve option kit, p/n 250.0026.

Contact your supplier in case of damage or if not all marked items on the checklist are included. Prior to shipment, the parts of your OMD valve option kit have been inspected and tested to ensure the best possible performance.

For optimal performance the metal parts of the OMD valve should be passivated with a 15% nitric acid solution for 20 minutes.

Tools

The following tool are necessary for the installation of the OMD valve option:

- 5/16" - 1/4" wrench
- Small flat head screw driver
- PEEK tubing cutter
- Phillips screw driver
- Allen key 9/64"



Figure 2. Photograph of listed tools. From left-to-right (Allen key not shown).

CHAPTER 2

Valve installation

Installation on valve mounting panel

It is assumed that the DECADE II valve mounting panel (p/n 250.0030) is already installed on the DECADE II detector. If not, please follow the installation instructions which came with the mounting panel and install this part first. Follow the instructions below to install the valve and mounting bracket(s) on the DECADE II valve mounting panel.

- Fix the valve bracket (p/n 250.0019) onto the mounting panel using the four supplied M3 screw as depicted in figure 11 on the next page.
- Mount valve in DECADE II bracket with the two M4 Allen screws as shown in figure 4. Note: there is a special indentation in the bracket to facilitate the screw to secure the valve head. Make sure that port 1 of the valve is positioned upwards.

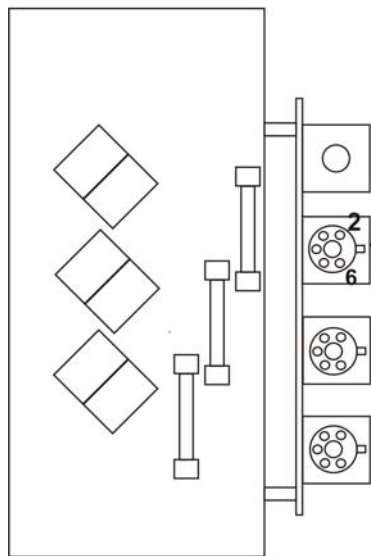


Figure 3. TCC parallel configuration, using three 6-port valves.

- Mount the 6-port valve with port 1 facing to the right-side of the detector (see figure 10). In case of multiple 6-port valves supplied with an online parallel DCC or TCC configuration, mount the valves as depicted in figure 3. In case of the 14-port valve mount the valve in such a way that port 1 is facing to the left-side (see figure 5).

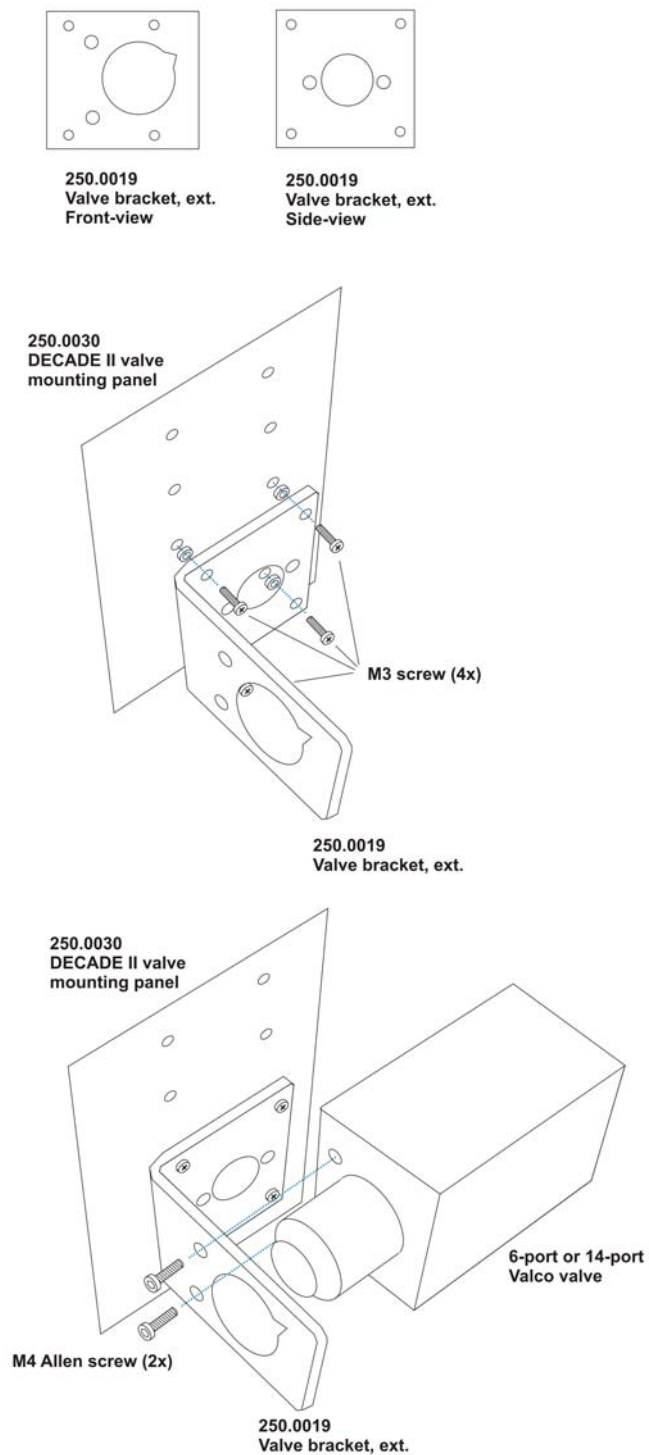


Figure 4. Mounting of bracket and valve on DII valve panel.

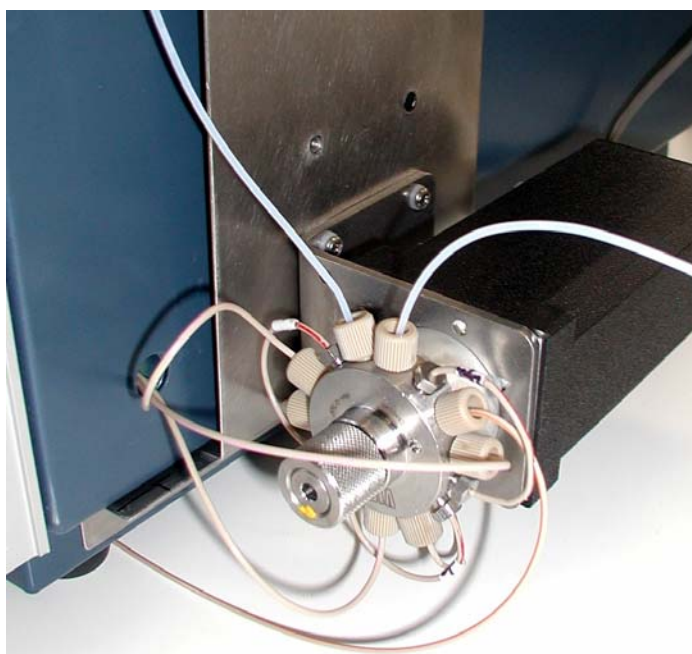
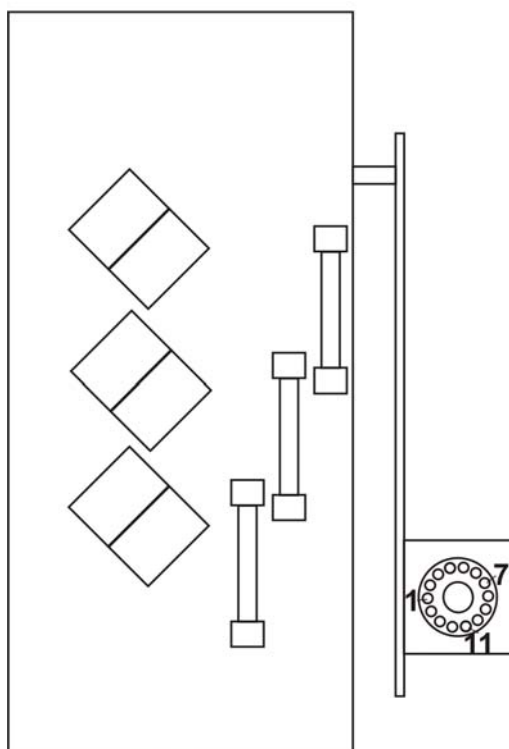


Figure 5. TCC time resolution configuration, using a single 14-port valve.

Installation on side panel

Follow the steps below to install the bracket on the left side panel.

- Remove protective plastic covers.

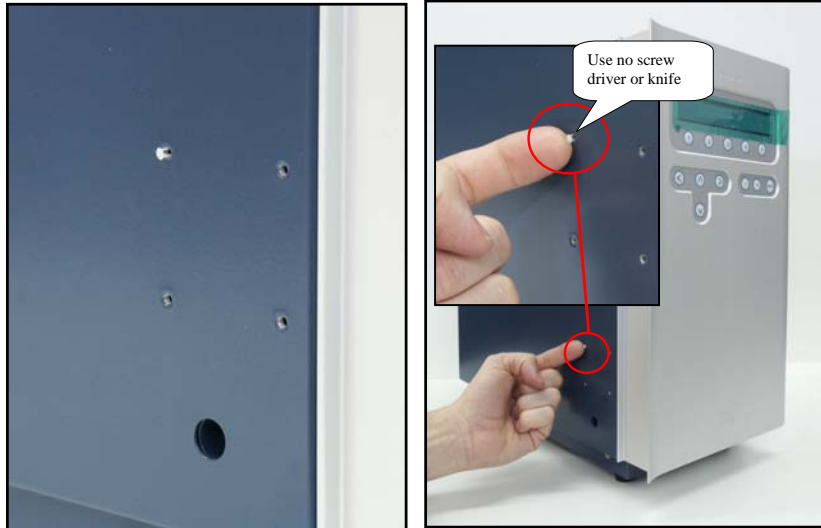


Figure 6. Protective plastic covers on side panel.

- Mount external valve bracket, p/n 250.0019 on DECADE II.



Figure 7. External valve bracket.

To install the valve follow the steps below:

- Mount valve in DECADE II bracket. Note: there is a special indentation (see red circle) in the bracket to facilitate the screw to

secure the valve head. Make sure that port 1 of the valve is positioned upwards.

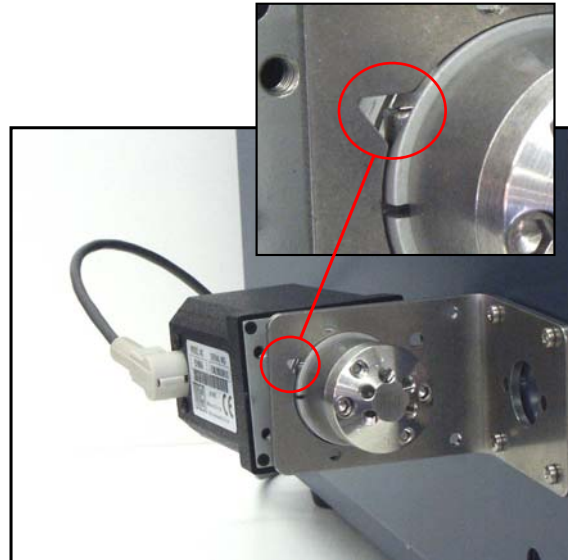


Figure 8. Mounting valve in external valve bracket.

- Secure valve in bracket using the supplied Allen screws.



Figure 9. Securing valve in external valve bracket.

- Valve is automatically detected by the DECADE II software. In the CONFIG menu “Valve = present” is visible.

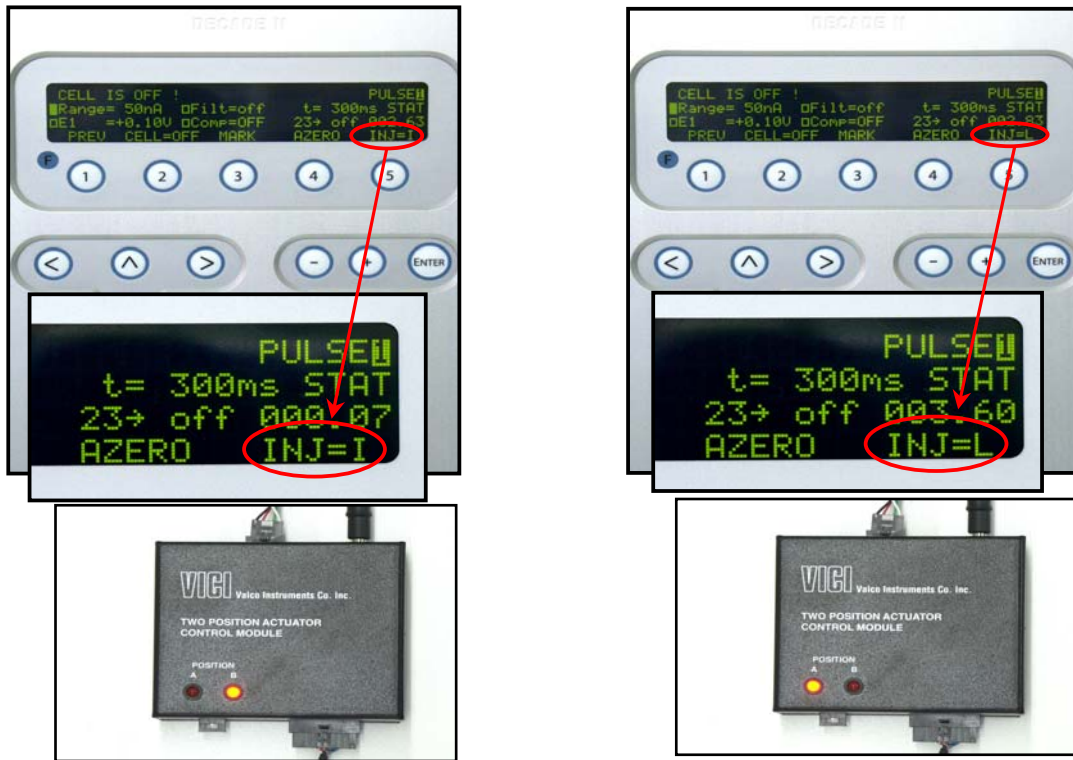


Figure 11. Correspondence between status on the actuator control module and valve status in the DC or PULSE mode STATUS screen of DECADE II

- For a detailed instruction of all LC connections on the valve refer to the ALEXYS LC connection kit manual supplied with your ALEXYS system.